



**FOR
LEASE**

± 1,021 SF

**20 GREAT GEORGE
STREET**
CHARLOTTETOWN | PE



the
GRAY GROUP
REAL ESTATE & DEVELOPMENT

LEASING INQUIRIES
902.894.4729
leasing@thegraygroup.ca



Positioned at the base of Great George Street, this ±1,021 SF office unit offers a functional and modern layout ideal for today's professionals. The space features an open-concept work area, private boardroom, and kitchenette, with access to shared common washrooms. Well suited for office users including marketing, consulting, and professional service firms. Recent façade improvements enhance the building's contemporary street presence.

Two (2) dedicated on-site parking spaces are included, conveniently located adjacent to the Confederation Landing parking area.

PROPERTY FEATURES



ASSIGNED PARKING SPACES



IN-UNIT KITCHENETTE



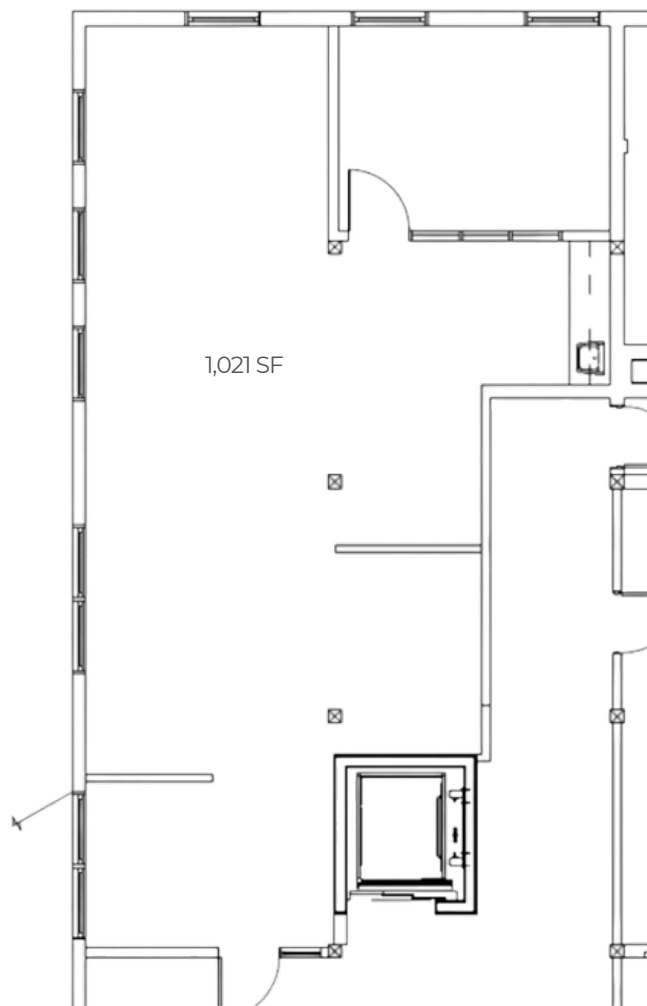
ABUNDANT NATURAL LIGHT



QUICK ACCESS TO SURROUNDING BUSINESSES



DOWNTOWN LOCATION

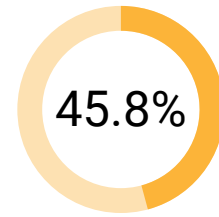


CHARLOTTETOWN DEMOGRAPHIC INSIGHTS



POPULATION
48,118 (2025 EST.)

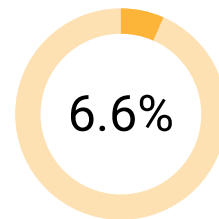
METRO > 96,000
PROJECTED 2026 GROWTH: +2.26%



HOMEOWNERSHIP RATE



AGE & WORKFORCE
MEDIUM AGE: **42.4**
WORKING AGE: **15-64 (65%)**
IMMIGRANT INFLUX DRIVING ECONOMY



UNEMPLOYMENT RATE



\$56,170
AVG. HOUSEHOLD INCOME



39.8%
BACHELOR'S DEGREE OR HIGHER

KEY SECTORS



Health care & Social Assistance



Retail Trade



Public Administration



Real Estate & Rental/Leasing

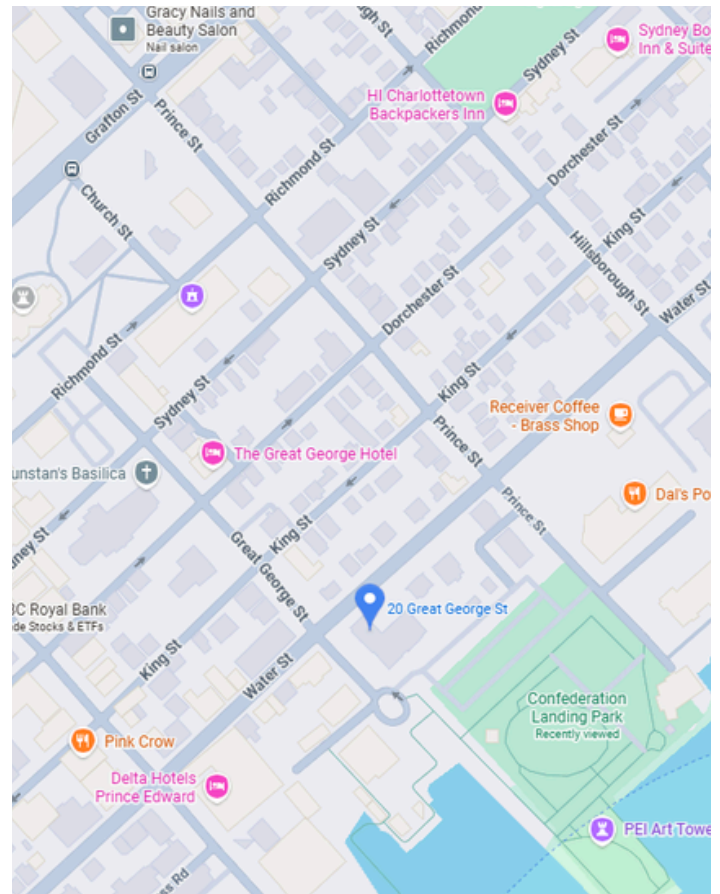


Construction



NEARBY DESTINATIONS

Destination	Walking Distance	Walking Minutes
Founders' Food Hall	0.4 km.	5 min.
Receiver Coffee - Bass Shop	0.5 km.	7 min.
Merchantman Restaurant	0.2 km.	3 min.
RBC Royal Bank	0.3 km.	5 min.
Lenox Dental Centre	0.1 km.	3 min.
HMS Office Supplies	0.3 km.	4 min.
Downtown Convenience	0.2 km.	4 min.
Charlottetown Library	0.4 km.	6 min.
Confederation Court Mall	0.7 km.	9 min.
PEI Provincial Court	0.3 km.	5 min.
Canada Post	0.7 km.	8 min.



CONTACT

Andrew Whidden | 902.894.4729 ext. 238 | leasing@thegraygroup.ca