



Riverview Place Reimagined

Redevelopment underway with pad sites, anchor, and CRU spaces available from 1,000 to 20,000 sq. ft.

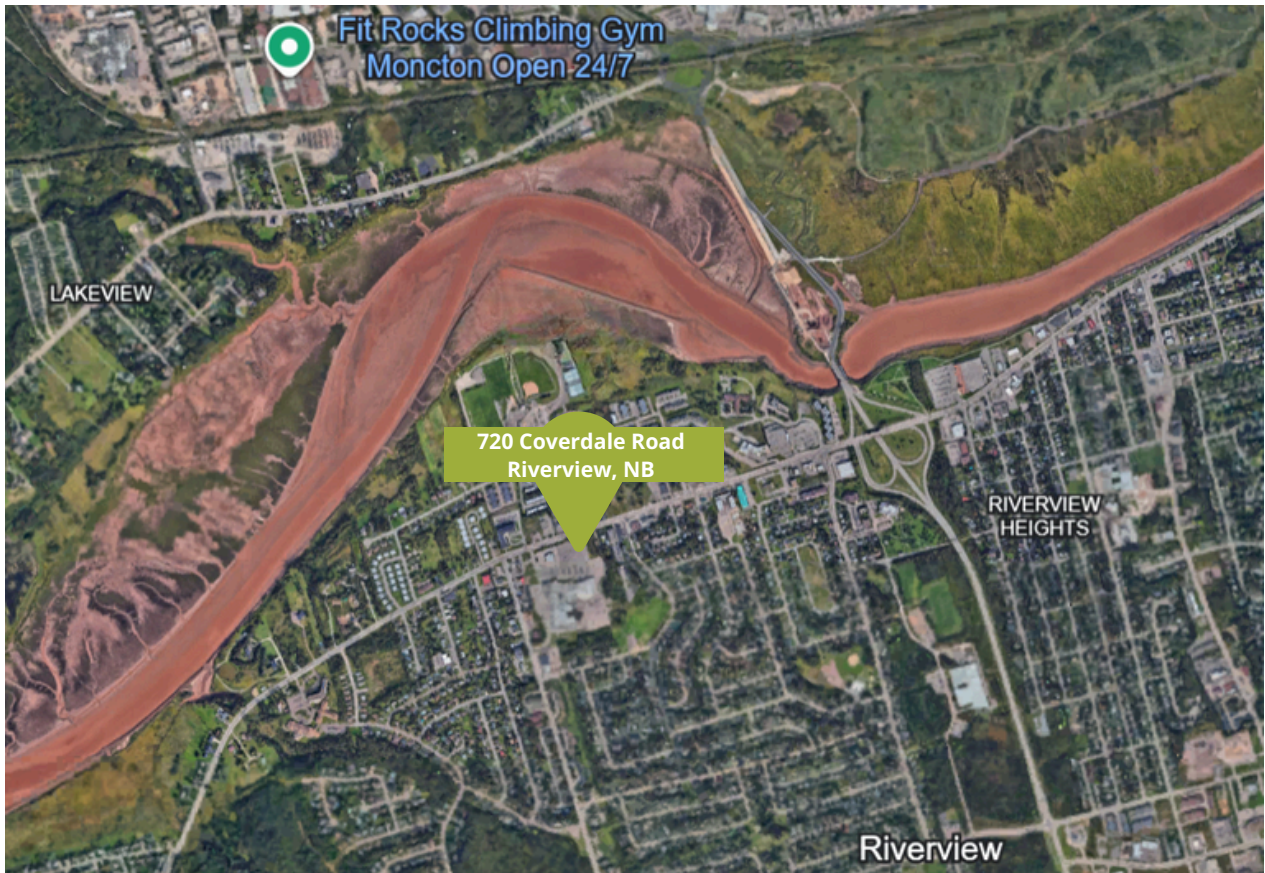


Heather Dobson
Senior Leasing Manager
902.818.1944
hdobson@pm-co.ca

Location

PMco, alongside new owners Tier Too Properties and The Gray Group, is revitalizing Riverview Place and breathing new life into this long-standing community hub.

Now, under new ownership, exciting plans are underway to revitalize the property and reimagine its role in the growing community of Riverview. The redevelopment will introduce a dynamic mix of new retailers, professional services, restaurant & entertainment uses. Future plans for the site will include residential components, transforming Riverview Place into a vibrant, mixed-use destination where people can live, work, and shop.



Demographics

Within 25 km of 720 Coverdale Road, Riverview, NB

Current
Population
155,847

Median
Age
41.5

Average
Household
Income
\$80,454

Cars
Daily
21,700

Number of
Households
50,060

Property Highlights

Size:

Total GLA105,380 SF

Redevelopment

- Transformation of the exterior façade using contemporary finishes and palette creating a modern plaza design.
- New and existing PAD sites available, perfect for restaurant, QSR's and professional services.
- Future Residential component will create a vibrant mixed-use destination to live, work, and shop.
- Leasing Opportunities are ideal for retail, entertainment, restaurant and professional services.

Amenities:

- Close proximity to UNB
- Centennial Park
- Avenir Centre
- YMCA
- Giant Tiger, CIBC

Renderings



Riverview Place Site Plan

