



For Lease | Amherst Centre Reimagined

Redevelopment underway with anchor and CRU spaces available from 2,000 to 30,000 SF

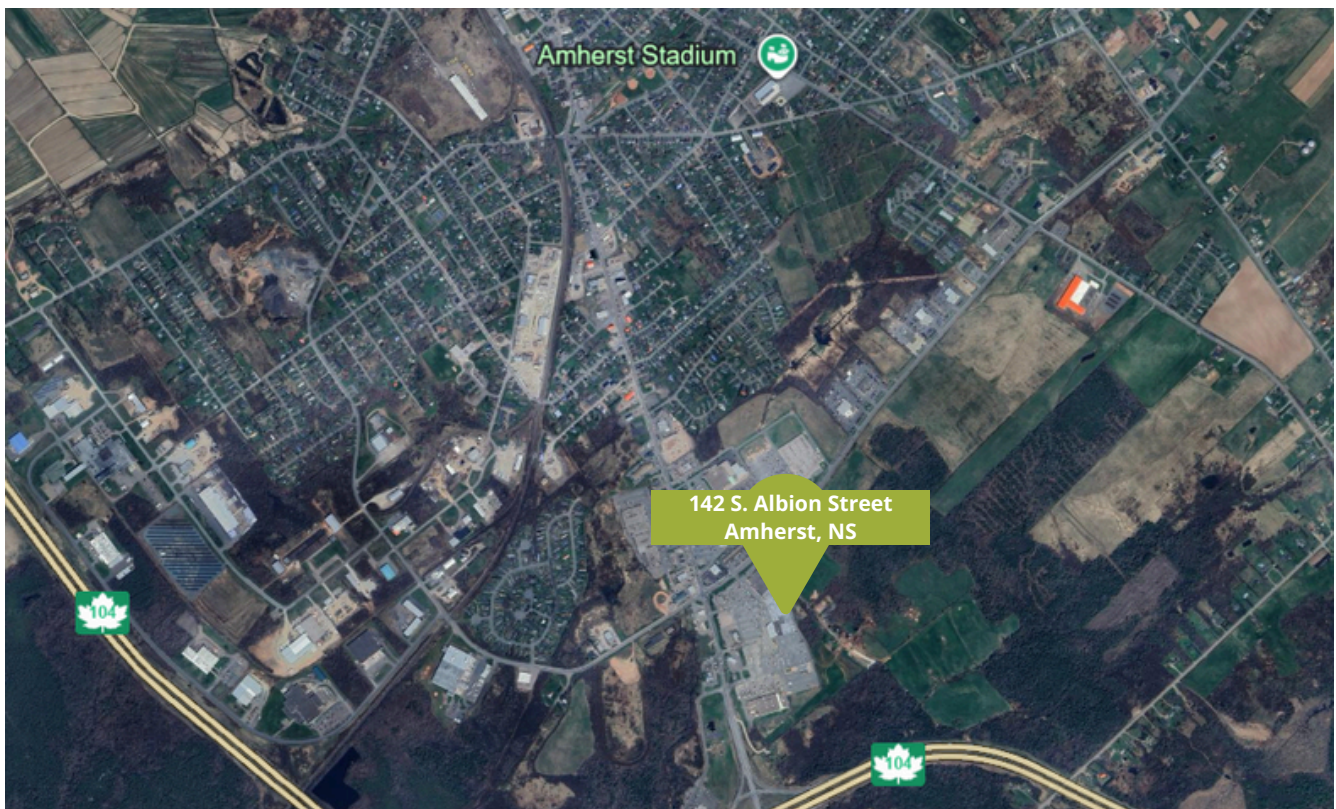


Heather Dobson
Senior Leasing Manager
902.818.1944
hdobson@pm-co.ca

Location

PMco, alongside new owners Tier Too Properties and The Gray Group, is leading the revitalization of Amherst Centre and breathing new life into this long-standing community hub.

Located in the heart of Amherst, NS, the Amherst Centre has been a cornerstone of the community for decades. Now, under new ownership, this landmark property is set for an exciting revitalization. The transformation will bring fresh energy, new opportunities, and an enhanced shopping experience that will continue to serve as a gathering place for the community for years to come.



Demographics

Within 25 km of 142 South Albion Street, Amherst, NS

Current
Population
9,500

Median
Age
46

Average
Household
Income
\$70,100

Cars
Daily
6,000

Number of
Households
4,500

Amherst Centre



Directory

Tenants:

- Unit 110 - Marks Work Warehouse (7,462 SF)
- Unit 120 - Cumberland Hospice (540 SF)
- Unit 125 - James Austin Merchandising Ltd (1,710 SF)
- Unit 130 - James Austin Merchandising Ltd (3,707 SF)
- Unit 145 - Northern Reflections (1,720 SF)
- Unit 150 - Amherst Artisan Group (8,401 SF)
- Unit 155 - Eastlink (908 SF)
- Unit 160 - Telus (962 SF)

- Unit 165 - Bell (1,065 SF)
- Unit 173 - Crossroads Cycle (956 SF)
- Unit 176 - JC's Tae Kwon Do (3,655 SF)
- Unit 178 - It's Got Item! Games (2,422 SF)
- Unit 182 - Eclipse (1,988 SF)
- Unit 185 - Easyhome (3,896 SF)
- Unit 192 - Atlantic Smile Dentistry (4,801 SF)
- Unit 196 - Amherst Artisan Group Arts & Entertainment Centre (3,351 SF)
- Unit 201 - Charm Diamond Centre (1,479 SF)

- Unit 204 - Rogers (617 SF)
- Unit 210 - East Coast Memorabilia
- Unit 235 - Hydro Mechanical Sales Ltd (1,481 SF)
- Unit 240 - Griffin Smoke Shop (184 SF)
- Unit A120 - Giant Tiger (23,184 SF)
- Unit FS10 - Scotia Bank (5,037 SF)
- Unit FS15 - FYidoctors (3,561 SF)
- Unit A307 - Dollartree (10,000 SF)

Leasing Opportunities:

- Unit 100 - 2,029 SF
- Unit 122 - 1,005 SF
- Unit 140 - 1,811 SF
- Unit 170 - 2,022 SF
- Unit 181 - 2,202 SF
- Unit 184 - 2,225 SF
- Unit 186 - 4,300 SF
- Unit 198 - 1,250 SF

- Unit 199 - 601 SF
- Unit 200 - 400 SF
- Unit 203 - 2,583 SF
- Unit 205 - 7,647 SF
- Unit 215 - 1,540 SF
- Unit 220 - 1,200 SF
- Unit 225 - 1,414 SF
- PAD1 - 5000 SF

- Unit 230 - 1,000 SF
- Unit A301 - 2,375 SF
- Unit A302 - 2,500 SF
- Unit A303 - 2,500 SF
- Unit A304 - 2,500 SF
- Unit A305 - 11,700 SF
- Unit A306 - 10,300 SF
- Unit A308 - 10,200 SF

Specifications

Opportunity Type:

Commercial Leasing

Location:

142 South Albion Street
Amherst, NS

Size:

Total GLA 227,994 SF

Redevelopment:

- Transformation of the exterior façade using contemporary finishes and pallet
- Creation of new CRU space and common area including new the addition of a food court, conversation areas and outdoor patio seating.
- Newly created in-line and anchor unit. Available spaces range from 2,500 SF to 25,000 SF
- Leasing Opportunities are ideal for retail, entertainment, restaurant and professional services.

Accessibility:

Barrier-free access from parking lot

Parking:

Ample Parking

Amenities:

- Close proximity to Mount Allison University
- Super 8 Motel, Travelodge
- YMCA
- Sobeyes, Canadian Tire, Walmart, Lawtons

Signage:

Front Entrance Signage for all Units

Renderings

