



**FOR LEASE**

LOWER SACKVILLE | NS

# 405 SACKVILLE DRIVE

UNIT 205 - 530 SF

**LEASING INQUIRIES**  
902.894.4729  
[leasing@thegraygroup.ca](mailto:leasing@thegraygroup.ca)

# FOR LEASE



## 405 SACKVILLE DRIVE, LOWER SACKVILLE | NS

This property offers easy access from both Sackville Drive and Pinehill Drive, ensuring convenience for employees and clients alike. There is plenty of off-street parking available, along with great visibility for the storefront.

The unit available is situated on the second floor and spans 530 square feet. It features three office areas, carpeted flooring and an in-unit sink, making it a perfect choice for office use.

### PROPERTY FEATURES



SURROUNDED BY MANY WELL-ESTABLISHED BUSINESSES



SIGNAGE OPPORTUNITY



AMPLE ON-SITE PARKING



GREAT VISIBILITY AND EXPOSURE



LOCATED NEAR A BUS STATION



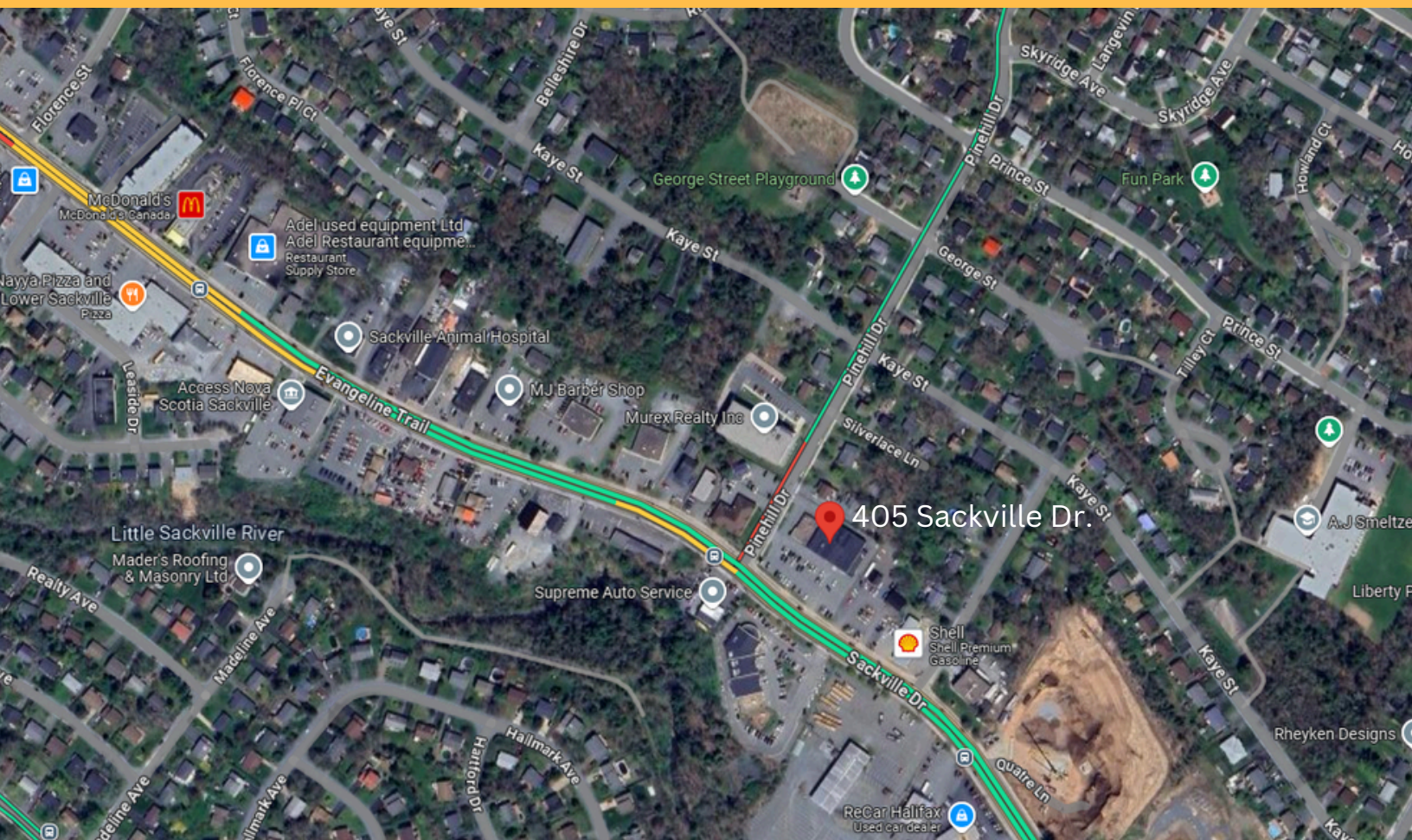
THREE OFFICE AREAS IN ONE UNIT

### CONTACT

Andrew Whidden | 902.894.4729 ext. 238 | [leasing@thegraygroup.ca](mailto:leasing@thegraygroup.ca)

FOR LEASE

405 SACKVILLE DRIVE, LOWER SACKVILLE | NS



## LOCATION INFORMATION

Lower Sackville is a peaceful bedroom community situated approximately 25 minutes from downtown Halifax and almost the same distance from downtown Dartmouth.

The property is conveniently situated on Sackville Drive, the primary route through Lower Sackville, where you can find most essential amenities. This area truly provides the perfect blend of peaceful suburban living along with the lively offerings of nearby urban centers.

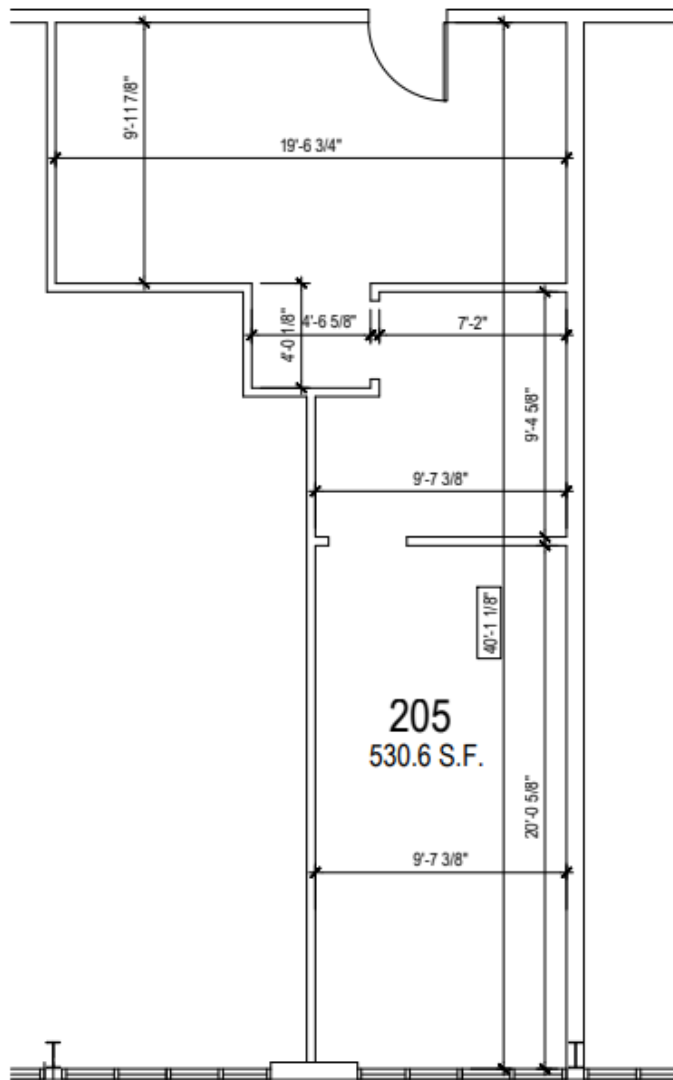


## CONTACT

Andrew Whidden | 902.894.4729 ext. 238 | [leasing@thegraygroup.ca](mailto:leasing@thegraygroup.ca)

FOR LEASE

405 SACKVILLE DRIVE, LOWER SACKVILLE | NS



UNIT 205

405 SACKVILLE DR.

LOWER SACKVILLE, NS

DATE: JULY 5, 2024

SCALE: 3/16" = 1'-0"

DRAWN BY: ID

## AVAILABLE UNIT FLOOR PLAN

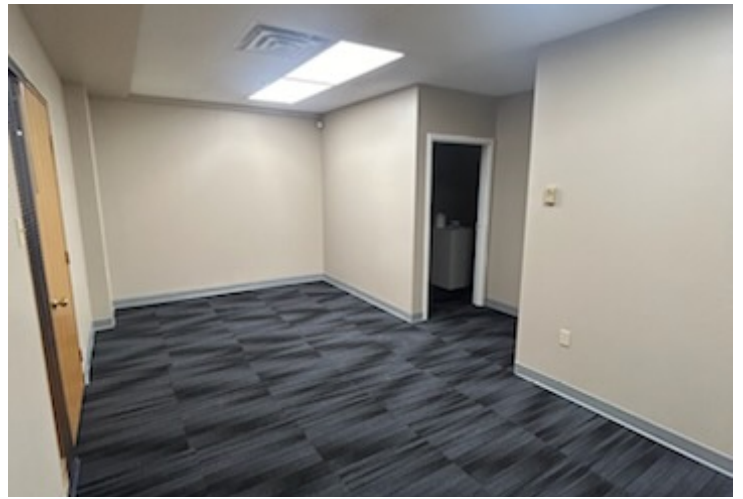


### CONTACT

Andrew Whidden | 902.894.4729 ext. 238 | leasing@thegraygroup.ca

**FOR LEASE**

**405 SACKVILLE DRIVE, LOWER SACKVILLE | NS**



**CONTACT**

Andrew Whidden | 902.894.4729 ext. 238 | [leasing@thegraygroup.ca](mailto:leasing@thegraygroup.ca)