

**FOR LEASE**



# **132 GLENCOE DRIVE**

**MOUNT PEARL | NL**



20 GREAT GEORGE STREET, CHARLOTTETOWN | PE C1A 4J6  
902.894.4729 | [THEGRAYGROUP.CA](http://THEGRAYGROUP.CA)



## 132 GLENCOE DRIVE, MOUNT PEARL | NL

Well positioned in Donovan's Industrial Park. This 36,489 sq. ft. building was previously government occupied and well maintained and service.



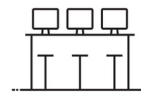
### PROPERTY FEATURES



AMPLE ON-SITE  
PARKING



LARGE OUTDOOR  
SPACE



OPEN SPACE  
CONCEPT



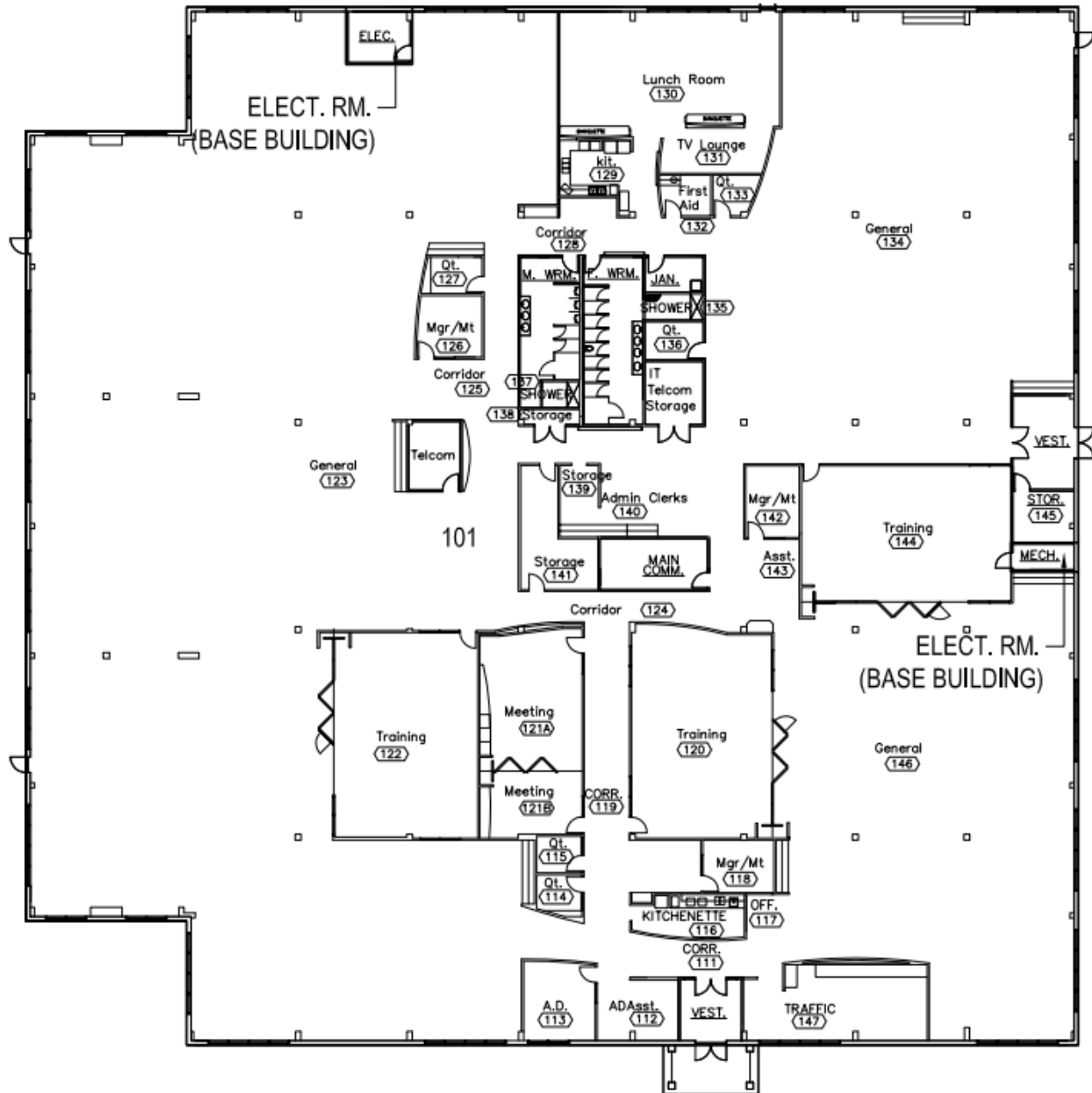
EASY ACCESS TO FREEWAYS  
AND MAJOR ARTERIES

### CONTACT

ANDREW WHIDDEN  
LEASING COORDINATOR  
902.894.4729 EXT. 238  
[LEASING@THEGRAYGROUP.CA](mailto:LEASING@THEGRAYGROUP.CA)



## FLOOR PLAN



### CONTACT

ANDREW WHIDDEN  
LEASING COORDINATOR  
902.894.4729 EXT. 238

[LEASING@THEGRAYGROUP.CA](mailto:LEASING@THEGRAYGROUP.CA)

## FOR LEASE



**132 GLENCOE DRIVE, MOUNT PEARL | NL**



## **OPEN SPACE CONCEPT**

Spacious office space with kitchen and multi-purpose boardrooms.  
Suitable for variety of usages such as mental health services, clinical  
space, community center and much more.



**FOR LEASE**

### **CONTACT**

ANDREW WHIDDEN  
LEASING COORDINATOR  
902.894.4729 EXT. 238  
[LEASING@THEGRAYGROUP.CA](mailto:LEASING@THEGRAYGROUP.CA)